

Aluminum Industrial Tube Vac Flange x Vac Flange

Clamp Not Included



Size	Gauge	Part Number	Wt. (Lbs)	List Price
6" x 3'	083	A06T030FLNG/FLG	8.68	
6" x 4'	083	A06T040FLNG/FLG	10.49	
6" x 5'	083	A06T050FLNG/FLG	12.30	
6" x 6'	083	A06T060FLNG/FLG	14.11	
6" x 7'	083	A06T070FLNG/FLG	15.92	
6" x 8'	083	A06T080FLNG/FLG	17.73	
6" x 9'	083	A06T090FLNG/FLG	19.54	
6" x 10'	083	A06T100FLNG/FLG	21.35	
8" x 3'	072	A06M030FLNG/FLG	10.33	
8" x 4'	072	A06M040FLNG/FLG	12.44	
8" x 5'	072	A06M050FLNG/FLG	14.55	
8" x 6'	072	A06M060FLNG/FLG	16.66	
8" x 7'	072	A06M070FLNG/FLG	18.77	
8" x 8'	072	A06M080FLNG/FLG	20.88	
8" x 9'	072	A06M090FLNG/FLG	2.99	
8" x 10'	072	A06M100FLNG/FLG	25.10	
8" x 3'	090	A06W030FLNG/FLG	12.34	
8" x 4'	090	A06W040FLNG/FLG	15.12	
8" x 5'	090	A06W050FLNG/FLG	17.90	
8" x 6'	090	A06W060FLNG/FLG	20.68	
8" x 7'	090	A06W070FLNG/FLG	23.46	
8" x 8'	090	A06W080FLNG/FLG	26.24	
8" x 9'	090	A06W090FLNG/FLG	29.02	
8" x 10'	090	A06W100FLNG/FLG	31.80	

Clamp Not Included.

Vac Flange



Vac Flange Clamp



Size	Part Number	Price	Size	Part Number	Price
6"	ITAVFL600		6"	IV32087	
8"	ITAVFL800		8"	ID16584	

Vac Flanges are available on Elbows (90°, 45°, 22 1/2°, 11 1/4°), Tees, Wyes, & Custom Adapters

ALUMINUM TUBE HAS NO WARRANTY AGAINST ANY TYPE OF CORROSION

Kroy Industries, Inc.

Prices Effective: January 1, 2020.

Prices Subject to Change Without Notice

Phone: 402-362-6651 or 888-477-5769 * Fax: 402-362-6566 * York, Nebraska

Aluminum Industrial Tube w/ Galvanized Circle Lock Ends

Clamp Not Included



Includes Gasket

Size	Gauge	Part Number	Wt. (Lbs)	List Price
4" x 3'	072	A04M030SGCL	8.15	
4" x 5'	072	A04M050SGCL	10.25	
4" x 7'	072	A04M070SGCL	12.60	
4" x 9'	072	A04M090SGCL	14.45	
4" x 10'	072	A04M100SGCL	15.50	
4" x 15'	072	A04M150SGCL	20.75	
4" x 20'	072	A04M200SGCL	26.00	
6" x 3'	083	A06T030SGCL	13.45	
6" x 4'	083	A06T040SGCL	15.25	
6" x 5'	083	A06T050SGCL	17.00	
6" x 6'	083	A06T060SGCL	18.90	
6" x 7'	083	A06T070SGCL	20.65	
6" x 8'	083	A06T080SGCL	22.50	
6" x 9'	083	A06T090SGCL	24.30	
6" x 10'	083	A06T100SGCL	26.10	
6" x 15'	083	A06T150SGCL	35.10	
6" x 20'	083	A06T200SGCL	44.20	
6" x 10'	125	A06Z100SGCL	35.32	
6" x 20'	125	A06Z200SGCL	62.62	
Call for Price and Availability of Additional Lengths of 6" .125 Gauge Tube				
8" x 3'	072	A08M030SGCL	21.30	
8" x 4'	072	A08M040SGCL	23.45	
8" x 5'	072	A08M050SGCL	25.50	
8" x 6'	072	A08M060SGCL	27.65	
8" x 7'	072	A08M070SGCL	29.75	
8" x 8'	072	A08M080SGCL	31.90	
8" x 9'	072	A08M090SGCL	34.00	
8" x 10'	072	A08M100SGCL	36.10	
8" x 15'	072	A08M150SGCL	46.60	
8" x 20'	072	A08M200SGCL	57.20	
8" x 3'	090	A08W030SGCL	23.35	
8" x 4'	090	A08W040SGCL	26.10	
8" x 5'	090	A08W050SGCL	28.90	
8" x 6'	090	A08W060SGCL	31.70	
8" x 7'	090	A08W070SGCL	34.45	
8" x 8'	090	A08W080SGCL	37.25	
8" x 9'	090	A08W090SGCL	40.00	
8" x 10'	090	A08W100SGCL	42.80	
8" x 15'	090	A08W150SGCL	56.80	
8" x 20'	090	A08W200SGCL	70.60	

Clamp Not Included.

ALUMINUM TUBE HAS NO WARRANTY AGAINST ANY TYPE OF CORROSION

Kroy Industries, Inc.

Prices Effective: January 1, 2020.

Prices Subject to Change Without Notice

Phone: 402-362-6651 or 888-477-5769 * Fax: 402-362-6566 * York, Nebraska

Aluminum Industrial Tube w/ Cast Aluminum Circle Lock Ends

Clamp Not Included



Includes Gasket

Size	Gauge	Part Number	Wt. (Lbs)	List Price
4" x 3'	072	A04M030RHPCL	6.15	
4" x 5'	072	A04M050RHPCL	8.25	
4" x 7'	072	A04M070RHPCL	10.35	
4" x 9'	072	A04M090RHPCL	12.45	
4" x 10'	072	A04M100RHPCL	13.50	
4" x 15'	072	A04M150RHPCL	18.75	
4" x 20'	072	A04M200RHPCL	24.00	
6" x 3'	083	A06T030RHPCL	9.60	
6" x 4'	083	A06T040RHPCL	11.40	
6" x 5'	083	A06T050RHPCL	13.20	
6" x 6'	083	A06T060RHPCL	15.00	
6" x 7'	083	A06T070RHPCL	16.80	
6" x 8'	083	A06T080RHPCL	18.60	
6" x 9'	083	A06T090RHPCL	20.45	
6" x 10'	083	A06T100RHPCL	22.25	
6" x 15'	083	A06T150RHPCL	31.25	
6" x 20'	083	A06T200RHPCL	40.35	
6" x 10'	125	A06Z100RHPCL	31.45	
6" x 20'	125	A06Z200RHPCL	58.75	
Call for Price and Availability of Additional Lengths of 6" .125 Gauge Tube				
8" x 3'	072	A08M030RHPCL	11.10	
8" x 4'	072	A08M040RHPCL	13.20	
8" x 5'	072	A08M050RHPCL	15.30	
8" x 6'	072	A08M060RHPCL	17.40	
8" x 7'	072	A08M070RHPCL	19.50	
8" x 8'	072	A08M080RHPCL	21.65	
8" x 9'	072	A08M090RHPCL	23.75	
8" x 10'	072	A08M100RHPCL	25.85	
8" x 15'	072	A08M150RHPCL	36.35	
8" x 20'	072	A08M200RHPCL	46.95	
8" x 3'	090	A08W030RHPCL	13.10	
8" x 4'	090	A08W040RHPCL	15.90	
8" x 5'	090	A08W050RHPCL	18.65	
8" x 6'	090	A08W060RHPCL	21.45	
8" x 7'	090	A08W070RHPCL	24.20	
8" x 8'	090	A08W080RHPCL	27.00	
8" x 9'	090	A08W090RHPCL	29.80	
8" x 10'	090	A08W100RHPCL	32.55	
8" x 15'	090	A08W150RHPCL	46.30	
8" x 20'	090	A08W200RHPCL	60.35	

Clamp Not Included.

ALUMINUM TUBE HAS NO WARRANTY AGAINST ANY TYPE OF CORROSION

Kroy Industries, Inc.

Prices Effective: January 1, 2020.

Prices Subject to Change Without Notice

Phone: 402-362-6651 or 888-477-5769 * Fax: 402-362-6566 * York, Nebraska

Steel Industrial Tube w/Circle Lock Ends

Clamp Not Included

Galvanized & Epoxy Coating Available



Diameter	Gauge	Part Number
4"	14	S0414HR
5"	12	S0512HRAK
6"	14	S0614HRAK
6"	12	S0612HRAK
8"	12	S0812HRAK
10"	12	S1012HRAK
12"	12	S1212HR

Contact For Current Pricing

Available Options for Steel & Aluminum Tubes:

Plain End OR Rolled
Circle Lock Ends
Flanges (Vac/Ansi)
Grooved End

Hose Barbed
Crown
Torque Couplers
Twist Lock
Sprinkler/Lateral

Kroy Bell Coupler
Midwest Style
Lever-Loc "Ball & Socket"
Threaded (MIPT/FIPT)

Clamp Not Included.

Other Sizes/Ends Available Upon Request.



Kroy Industries, Inc.

Prices Effective: January 1, 2020.

Prices Subject to Change Without Notice

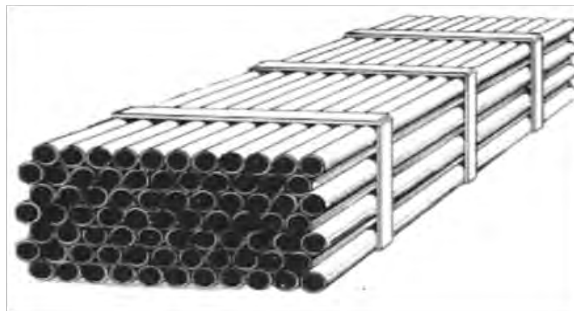
Phone: 402-362-6651 or 888-477-5769 * Fax: 402-362-6566 * York, Nebraska

Plain End Aluminum Tube



Outside Diameter (Inches)	Wall Thickness (Inches)*	Apprx. Pieces Per Bundle	Apprx. Pieces Per Load	Weight Per 100 Ft (Lbs)	Press/Weld Charge
2	050	105	1890	36	\$2.25
3	050	126	1008	54	\$2.25
3	065	126	1008	71	\$2.25
4	050	77	616	73	\$2.25
4	072	77	616	105	\$2.25
5	052	40	320	94	\$2.50
5	078	40	320	142	\$2.50
6	050	42	252	110	\$2.50
6	058	42	252	126	\$2.50
6	083	42	252	181	\$2.50
6	125	42	252	181	\$2.50
7	060	24	192	164	\$3.00
8	050	20 & 25	140	150	\$3.00
8	064	20 & 25	140	188	\$3.00
8	072	20 & 25	140	211	\$3.00
8	083	20 & 25	140	242	\$3.00
8	090	20 & 25	140	278	\$3.00
10	051	16 & 12	88	190	\$4.00
10	064	16 & 12	88	238	\$4.00
10	083	16 & 12	88	305	\$4.00
10	094	16 & 12	88	344	\$4.00
12	064	9 & 11	67	286	\$5.00
12	094	9 & 11	67	419	\$5.00

*Heavier wall thickness is available. Please call for quote.



ALUMINUM TUBE HAS NO WARRANTY AGAINST ANY TYPE OF CORROSION

KROY INDUSTRIES, INC.

Prices Effective: January 1, 2020. Prices Subject to Change Without Notice
 Phone: 402-362-6651 or 888-477-5769 * Fax: 402-362-6566 * York, Nebraska

Industrial Fittings

Galvanized Circle Lock

Circle Lock Mainline Coupler Set



Press in female, male, gasket and clamp

Size	Part Number	Wt/Lbs	Price
3"	SK100503	5.00	
4"	SK100504	6.50	
5"	SK100505	9.00	
6"	SK100506	10.00	
8"	SK100508	17.50	
10"	SK100510	25.00	
12"	SK100512	31.00	

Black #SK1006 - Big Bump #SK1030

Circle Lock Female Coupler



Press in female with gasket

Size	Part Number	Wt/Lbs	Price
3"	SK102003	2.00	
4"	SK102004	2.50	
5"	SK102005	3.50	
6"	SK102006	4.00	
8"	SK102008	8.00	
10"	SK102010	10.50	
12"	SK102012	15.00	

Black #SK1021

Circle Lock Male End



Press in male coupler--Big Bump available at same price

Size	Part Number	Wt/Lbs	Price
3"	SK101003	2.00	
4"	SK101004	2.50	
5"	SK101005	3.50	
6"	SK101006	4.00	
8"	SK101008	7.00	
10"	SK101010	11.00	
12"	SK101012	14.00	

Black #SK1011 - Big Bump #SK1012

High Pressure Circle Lock Clamp



Size	Part Number	Wt/Lbs	Price
3"	ITHPRLC 300	1.40	
4"	ITHPRLC 400	1.60	
5"	ITHPRLC 500	1.80	
6"	ITHPRLC 600	2.00	
8"	ITHPRLC 800	2.50	
10"	ITHPRLC1000	3.50	
12"	ITHPRLC1200	5.25	

KROY INDUSTRIES, INC.

Prices Effective: January 1, 2020. Prices Subject to Change Without Notice
Phone: 402-362-6651 or 888-477-5769 * Fax: 402-362-6566 * York, Nebraska

Industrial Fittings

Galvanized Circle Lock

Prices Do Not Include Clamps

Circle Lock Wye Tee



Size	Part Number	Wt/Lbs	Price
4"x3"x3"	SK11960403	8.50	
6"x3"x3"	SK11960603	11.00	
6"x4"x4"	SK11960604	12.00	
6"x6"x6"	SK11960606	14.00	
8"x4"x4"	SK11960804	16.00	
8"x6"x6"	SK11960806	18.00	
8"x8"x8"	SK11960808	21.00	

Other sizes available, please inquire.

Circle Lock Vacuum Breaker



Size	Part Number	Wt/Lbs	Price
4" x 4" x 4"	SH111004	12.00	
6" x 6" x 6"	SH111006	18.00	
8" x 8" x 8"	SH111008	24.00	

Replacement Lids = \$75.00.

Galvanized Crown



Size	Part Number	Wt/Lbs	Price
6"	SK150006	4.50	
8"	SK150008	8.00	

With 4 1" Holes Add \$15.00.

Black Steel Starter Coupler Set



Gasket Included

Size	Part Number	Wt/Lbs	Price
3"	SK100703	3.60	
4"	SK100704	4.60	
5"	SK100705	5.80	
6"	SK100706	7.60	
8"	SK100708	11.50	
10"	SK100710	14.50	
12"	SK100712	23.25	

Starter Coupler Black Female



Gasket Included

Steel Starter Black Male



Big Bump available at same price

Size	Coupler Part Number	Coupler Price	Male End Part Number	Male End Price
3"	SK101503		SK102503	
4"	SK101504		SK102504	
5"	SK101505		SK102505	
6"	SK101506		SK102506	
8"	SK101508		SK102508	
10"	SK101510		SK102510	
12"	SK101512		SK102512	

Big Bump #SK1026

KROY INDUSTRIES, INC.

Prices Effective: January 1, 2020.

Prices Subject to Change Without Notice

Phone: 402-362-6651 or 888-477-5769 * Fax: 402-362-6566 * York, Nebraska

Industrial Fittings

Galvanized Circle Lock Fittings

Prices Do Not Include Clamps

Circle Lock Reducer



Reducer

Increaser

Size	Reducer Part Number	Reducer Price	Increaser Part Number	Increaser Price
4"x3"	SK11600403		SK11630304	
5"x4"	SK11600504		SK11630405	
6"x4"	SK11600604		SK11630406	
6"x5"	SK11600605		SK11630506	
8"x6"	SK11600806		SK11630608	
10"x6"	SK11601006		SK11630610	
10"x8"	SK11601008		SK11630810	
12"x10"	SK11601210		SK11631012	

Circle Lock End Plug/Cap



Size	End Plug Part Number	End Plug Price	End Cap Part Number	End Cap Price
3"	SK117003		SK117403	
4"	SK117004		SK117404	
5"	SK117005		SK117405	
6"	SK117006		SK117406	
8"	SK117008		SK117408	
10"	SK117010		SK117410	
12"	SK117012		SK117412	

Circle Lock 45 Degree Elbow



11¼" and 22½" Degree
Elbows Available at Same Price

Size	Part Number	Wt/Lbs	Price
3"	SK115003	5.00	
4"	SK115004	6.00	
5"	SK115005	7.00	
6"	SK115006	9.00	
8"	SK115008	16.00	
10"	SK115010	19.00	
12"	SK115012	26.00	

Circle Lock 90 Degree Elbow



Size	Part Number	Wt/Lbs	Price
3"	SK114003	6.00	
4"	SK114004	7.00	
5"	SK114005	8.00	
6"	SK114006	11.00	
8"	SK114008	18.00	
10"	SK114010	22.00	
12"	SK114012	30.00	

KROY INDUSTRIES, INC.

Prices Effective: January 1, 2020. Prices Subject to Change Without Notice
Phone: 402-362-6651 or 888-477-5769 * Fax: 402-362-6566 * York, Nebraska

Industrial Fittings

Hose Barbs

Galvanized Steel Circle Lock Hose Barbs



Female		
Size	Part Number	Price
4"	SH140004	
6"	SH140006	
8"	SH140008	
10"	SH140010	
12"	SH140012	



Male		
Size	Part Number	Price
4"	SH140404	
6"	SH140406	
8"	SH140408	
10"	SH140410	
12"	SH140412	

Plain End Hose Barbs

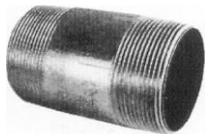
Aluminum		
Size	Part Number	Price
3"	IH140203	
4"	IH140204	
5"	IH140205	
6"	IH140206	
8"	IH140208	
10"	IH140210	
12"	IH140212	

Steel		
Size	Part Number	Price
4"	SH140204	
6"	SH140206	
8"	SH140208	
10"	SH140210	
12"	SH140212	

Black Steel Nipples



Half Nipple



Full Nipple

Size	Half Nipple Part Number	Half Nipple Price	Full Nipple Part Number	Full Nipple Price
3/4"	SKNA075		SKFNA075	
1"	SKNA100		SKFNA100	
1 1/4"	SKNA125		SKFNA125	
1 1/2"	SKNA150		SKFNA150	
2"	SKNA200		SKFNA200	
2 1/2"	SKNA250		SKFNA250	
3"	SKNA300		SKFNA300	
4"	SKNA400		SKFNA400	
5"	SKNA500		SKFNA500	
6"	SKNA600		SKFNA600	

Black Steel Couplings



Half Coupling



Full Coupling

Size	Half Coup. Part Number	Half Coup. Price	Full Coup. Part Number	Full Coup. Price
3/4"	SKHC075		SKFC075	
1"	SKHC100		SKFC100	
1 1/4"	SKHC125		SKFC125	
1 1/2"	SKHC150		SKFC150	
2"	SKHC200		SKFC200	
2 1/2"	SKHC250		SKFC250	
3"	SKHC300		SKFC300	
4"	SKHC400		SKFC400	
5"	SKHC500		SKFC500	
6"	SKHC600		SKFC600	

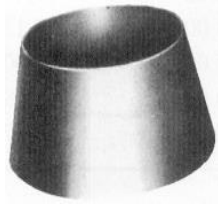
KROY INDUSTRIES, INC.

Prices Effective: January 1, 2020.

Prices Subject to Change Without Notice

Industrial Fittings

Black Welding Cones



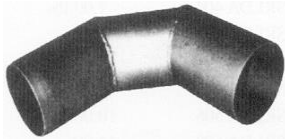
Heavy Duty 10 GA.

Size	Part Number	Price
4 x 6	STBWC46HD	
6 x 8	STBWC68HD	
8 x 10	STBWC810HD	
10 x 12	STBWC1012HD	

Size	Part Number	Wt./Lbs.	Price
2 x 3	STBWC 23	0.5	
2 x 4	STBWC 24	1.0	
3 x 4	STBWC 34	0.5	
3 x 5	STBWC 35	1.5	
4 x 5	STBWC 45	0.7	
3 x 6	STBWC 36	2.0	
4 x 6	STBWC 46	1.7	
5 x 6	STBWC 56	0.9	
6 x 7	STBWC 67	1.0	
4 x 8	STBWC 48	3.9	
5 x 8	STBWC 58	3.0	
6 x 8	STBWC 68	2.1	
7 x 8	STBWC 78	1.4	
8 x 10	STBWC 810	3.3	
9 x 10	STBWC 910	2.2	
10 x 12	STBWC1012	4.5	

12 Gauge is standard.

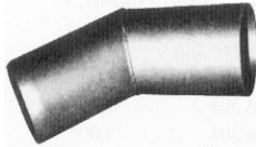
Black Weld On 90° Elbow



12 Ga. Standard/HD Elbows Available Upon Request

Size	Part Number	Wt./Lbs.	Price
3	SK134603	4.0	
4	SK134604	6.0	
5	SK134605	8.0	
6	SK134606	10.0	
7	SK134607	11.0	
8	SK134608	12.0	
10	SK134610	15.0	

Black Weld On 45° Elbow



12 Ga. Standard/HD Elbows Available Upon Request

Size	Part Number	Wt./Lbs.	Price
3	SK135603	3.0	
4	SK135604	5.0	
5	SK135605	7.0	
6	SK135606	9.0	
7	SK135607	10.0	
8	SK135608	11.0	
10	SK1356010	13.0	

Black Weld On Heavy Duty 45° Sweep Elbow



Size	Part Number	Wt./Lbs.	Price
6	SK133306H		
8	SK133308H		

Black Weld On Heavy Duty 90° Sweep Elbow



Size	Part Number	Wt./Lbs.	Price
6	SK133106H		
8	SK133108H		

KROY INDUSTRIES, INC.

Prices Effective: January 1, 2020. Prices Subject to Change Without Notice
Phone: 402-362-6651 or 888-477-5769 * Fax: 402-362-6566 * York, Nebraska

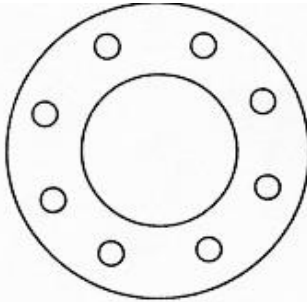
Industrial Fittings

Black Steel Companion Flange

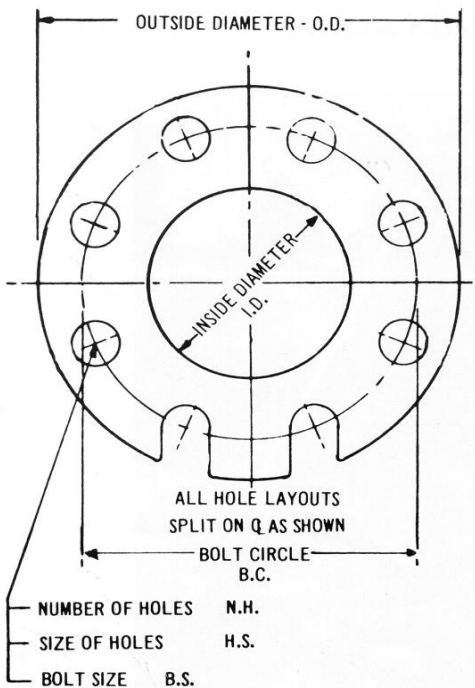


Size	Part Number	Wt/Lbs	Price
3"	SK330003	5.00	
4"	SK330004	6.75	
5"	SK330005	7.25	
6"	SK330006	9.25	
8"	SK330008	12.50	
10"	SK330010	17.00	
12"	SK330012	24.25	

Full Faced Gasket



Size	Part Number	Price
3"	ITCPF- 3-GF	
4"	ITCPF- 4-GF	
5"	ITCPF- 5-GF	
6"	ITCPF- 6-GF	
8"	ITCPF- 8-GF	
10"	ITCPF-10-GF	
12"	ITCPF-12-GF	



PIPE SIZE	O.D.	I.D.	B.C.	N.H.	H.S.	B.S.
2"	6"	2"	4 ³ / ₄ "	4	3/4"	5/8"
3"	7 ¹ / ₂ "	3"	6"	4	3/4"	5/8"
4"	9"	4"	7 ¹ / ₂ "	8	3/4"	5/8"
5"	10"	5"	8 ¹ / ₂ "	8	7/8"	3/4"
6"	11"	6"	9 ¹ / ₂ "	8	7/8"	3/4"
8"	13 ¹ / ₂ "	8"	11 ³ / ₄ "	8	7/8"	3/4"
10"	16"	10"	14 ¹ / ₄ "	12	1"	7/8"
12"	19"	12"	17"	12	1"	7/8"

KROY INDUSTRIES, INC.

Prices Effective: January 1, 2020. Prices Subject to Change Without Notice
 Phone: 402-362-6651 or 888-477-5769 * Fax: 402-362-6566 * York, Nebraska