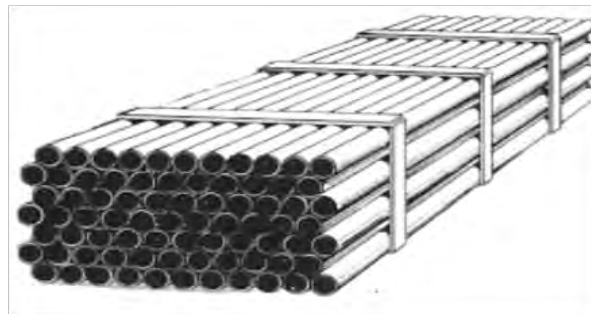


# Plain End Aluminum Tube



Outside Diameter (Inches)	Wall Thickness (Inches)*	Apprx. Pieces Per Bundle	Apprx. Pieces Per Load	Weight Per 100 Ft (Lbs)	Press/Weld Charge
2	050	105	1890	36	\$2.25
3	050	126	1008	54	\$2.25
3	065	126	1008	71	\$2.25
4	050	77	616	73	\$2.25
4	072	77	616	105	\$2.25
5	052	40	320	94	\$2.50
5	078	40	320	142	\$2.50
6	050	42	252	110	\$2.50
6	058	42	252	126	\$2.50
6	083	42	252	181	\$2.50
6	125	42	252	181	\$2.50
7	060	24	192	164	\$3.00
8	050	20 & 25	140	150	\$3.00
8	064	20 & 25	140	188	\$3.00
8	072	20 & 25	140	211	\$3.00
8	083	20 & 25	140	242	\$3.00
8	090	20 & 25	140	278	\$3.00
10	051	16 & 12	88	190	\$4.00
10	064	16 & 12	88	238	\$4.00
10	083	16 & 12	88	305	\$4.00
10	094	16 & 12	88	344	\$4.00
12	064	9 & 11	67	286	\$5.00
12	094	9 & 11	67	419	\$5.00

\*Heavier wall thickness is available. Please call for quote.



ALUMINUM TUBE HAS NO WARRANTY AGAINST ANY TYPE OF CORROSION

## KROY INDUSTRIES, INC.

Prices Effective: January 1, 2020. Prices Subject to Change Without Notice  
 Phone: 402-362-6651 or 888-477-5769 \* Fax: 402-362-6566 \* York, Nebraska

# Aluminum Irrigation Tube w/ Galvanized Circle Lock Ends

\*\*\*Clamp Included\*\*\*



Includes Gasket

Size	Gauge	Part Number
3" x 20'	050	A03A200SGCL
3" x 30'	050	A03A300SGCL
3" x 40'	050	A03A400SGCL
4" x 20'	050	A04A200SGCL
4" x 30'	050	A04A300SGCL
4" x 40'	050	A04A400SGCL
5" x 20"	052	A05C200SGCL
5" x 30'	052	A05C300SGCL
5" x 40'	052	A05C400SGCL
6" x 5'	058	A06F050SGCL
6" x 10'	058	A06F100SGCL
6" x 15'	058	A06F150SGCL
6" x 20'	058	A06F200SGCL
6" x 30'	058	A06F300SGCL
6" x 40'	058	A06F400SGCL
8" x 5'	064	A08I050SGCL
8" x 10'	064	A08I100SGCL
8" x 15'	064	A08I150SGCL
8" x 20'	064	A08I200SGCL
8" x 30'	064	A08I300SGCL
8" x 40'	064	A08I400SGCL
10" x 5'	064	A10I050SGCL
10" x 10'	064	A10I100SGCL
10" x 15'	064	A10I150SGCL
10" x 20'	064	A10I200SGCL
10" x 30'	064	A10I300SGCL
10" x 40'	064	A10I400SGCL
12" x 10'	064	A12I100SGCL
12" x 15"	064	A12I150SGCL
12" x 20'	064	A12I200SGCL
12" x 30'	064	A12I300SGCL

INCLUDES STEEL COUPLER, MALE END, GASKET, AND CIRCLE LOCK CLAMP

\*\*\*CALL FOR PRICING\*\*\*

## QUANTITY DISCOUNTS AVAILABLE

ALUMINUM TUBE HAS NO WARRANTY AGAINST ANY TYPE OF CORROSION

**Kroy Industries, Inc.**

Prices Effective: January 1, 2020.

Prices Subject to Change Without Notice

Phone: 402-362-6651 or 888-477-5769 \* Fax: 402-362-6566 \* York, Nebraska

# Aluminum Irrigation Tube w/ Cast Aluminum Circle Lock Ends

\*\*\*Clamp Included\*\*\*



**Includes Gasket**

Size	Gauge	Part Number
4" x 20'	050	A04A200RWHPCCL
4" x 30'	050	A04A300RWHPCCL
4" x 40'	050	A04A400RWHPCCL
5" x 20"	052	A05C200RWHPCCL
5" x 30'	052	A05C300RWHPCCL
5" x 40'	052	A05C400RWHPCCL
6" x 5'	058	A06F050RWHPCCL
6" x 10'	058	A06F100RWHPCCL
6" x 15'	058	A06F150RWHPCCL
6" x 20'	058	A06F200RWHPCCL
6" x 30'	058	A06F300RWHPCCL
6" x 40'	058	A06F400RWHPCCL
7" x 20'	064	A07I200RWHPCCL
7" x 30'	064	A07I300RWHPCCL
7" x 40'	064	A07I400RWHPCCL
8" x 5'	064	A08I050RWHPCCL
8" x 10'	064	A08I100RWHPCCL
8" x 15'	064	A08I150RWHPCCL
8" x 20'	064	A08I200RWHPCCL
8" x 30'	064	A08I300RWHPCCL
8" x 40'	064	A08I400RWHPCCL
10" x 5'	064	A10I050RWHPCCL
10" x 10'	064	A10I100RWHPCCL
10" x 15'	064	A10I150RWHPCCL
10" x 20'	064	A10I200RWHPCCL
10" x 30'	064	A10I300RWHPCCL
10" x 40'	064	A10I400RWHPCCL
12" x 10'	064	A12I100RWHPCCL
12" x 15"	064	A12I150RWHPCCL
12" x 20'	064	A12I200RWHPCCL
12" x 30'	064	A12I300RWHPCCL
12" x 40"	064	A12I400RWHPCCL

INCLUDES ALUMINUM COUPLER, MALE END, GASKET, AND CIRCLE LOCK CLAMP

**\*\*\*CALL FOR PRICING\*\*\***

**QUANTITY DISCOUNTS AVAILABLE**

ALUMINUM TUBE HAS NO WARRANTY AGAINST ANY TYPE OF CORROSION

**Kroy Industries, Inc.**

Prices Effective: January 1, 2020.

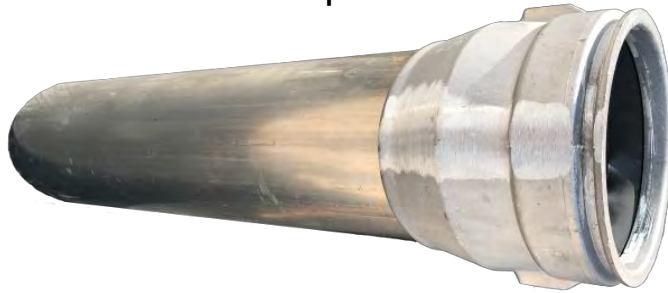
Prices Subject to Change Without Notice

Phone: 402-362-6651 or 888-477-5769 \* Fax: 402-362-6566 \* York, Nebraska

# Aluminum Irrigation Tube w/ Kroy Bell Coupler & B/L Assembly

## High Pressure Aluminum

\*\*\*Clamp Included\*\*\*



### Includes Gasket

Size	Gauge	Part Number
5" x 20'	052	A05C200ML
5" x 30'	052	A05C300ML
5" x 40'	052	A05C400ML
6" x 5'	058	A06F050KB
6" x 10'	058	A06F100KB
6" x 15'	058	A06F150KB
6" x 20'	058	A06F200KB
6" x 30'	058	A06F300KB
6" x 40'	058	A06F400KB
8" x 5'	064	A08I050KB
8" x 10'	064	A08I100KB
8" x 15'	064	A08I150KB
8" x 20'	064	A08I200KB
8" x 30'	064	A08I300KB
8" x 40'	064	A08I400KB
10" x 5'	064	A10I050KB
10" x 10'	064	A10I100KB
10" x 15'	064	A10I150KB
10" x 20'	064	A10I200KB
10" x 30'	064	A10I300KB
10" x 40'	064	A10I400KB

12" AVAILABLE UPON REQUEST

INCLUDES ALUMINUM COUPLER, GASKET, AND BAND & LATCH ASSEMBLY

**\*\*\*CALL FOR PRICING\*\*\***

## QUANTITY DISCOUNTS AVAILABLE

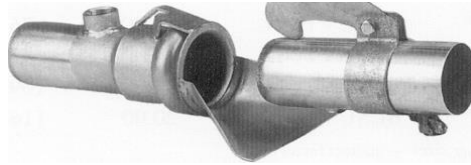
ALUMINUM TUBE HAS NO WARRANTY AGAINST ANY TYPE OF CORROSION

**Kroy Industries, Inc.**

Prices Effective: January 1, 2020.      Prices Subject to Change Without Notice

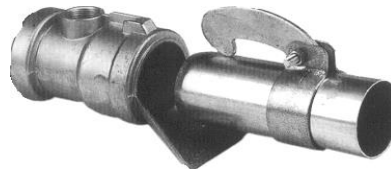
Phone: 402-362-6651 or 888-477-5769 \* Fax: 402-362-6566 \* York, Nebraska

# Aluminum Irrigation Sprinkler Pipe



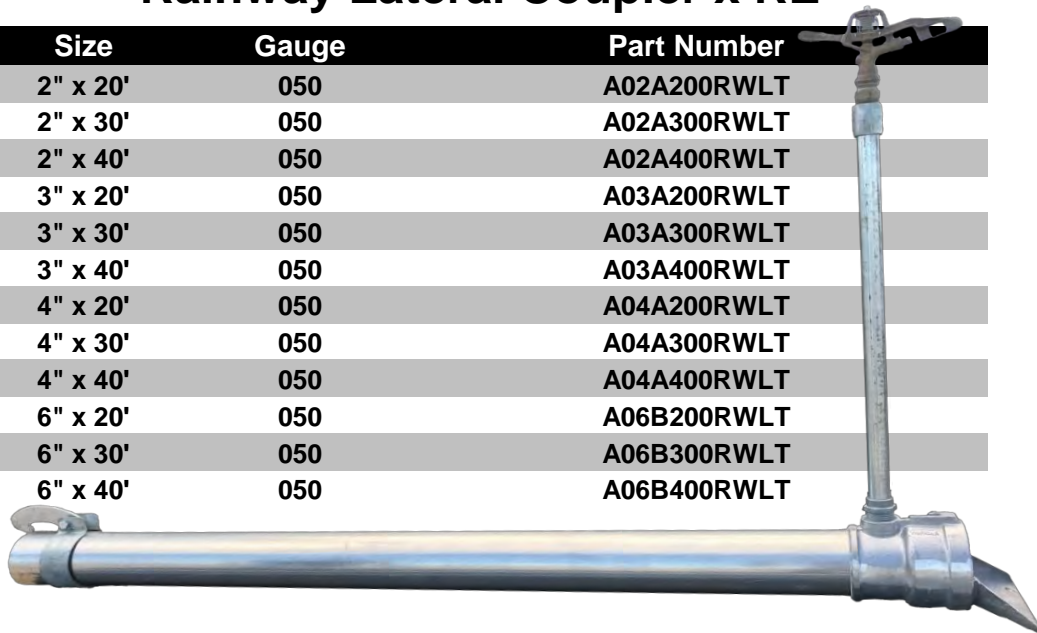
## Galvanized Press-In Lateral Coupler x RE

Size	Gauge	Part Number
2" x 20'	050	A02A200SGLT
2" x 30'	050	A02A300SGLT
2" x 40'	050	A02A400SGLT
3" x 20'	050	A03A200SGLT
3" x 30'	050	A03A300SGLT
3" x 40'	050	A04A400SGLT
4" x 20'	050	A04A200SGLT
4" x 30'	050	A04A300SGLT
4" x 40'	050	A04A400SGLT



## Rainway Lateral Coupler x RE

Size	Gauge	Part Number
2" x 20'	050	A02A200RWLT
2" x 30'	050	A02A300RWLT
2" x 40'	050	A02A400RWLT
3" x 20'	050	A03A200RWLT
3" x 30'	050	A03A300RWLT
3" x 40'	050	A03A400RWLT
4" x 20'	050	A04A200RWLT
4" x 30'	050	A04A300RWLT
4" x 40'	050	A04A400RWLT
6" x 20'	050	A06B200RWLT
6" x 30'	050	A06B300RWLT
6" x 40'	050	A06B400RWLT



**Contact Us For Current Pricing!**

ALUMINUM TUBE HAS NO WARRANTY AGAINST ANY TYPE OF CORROSION

**Kroy Industries, Inc.**

Prices Effective: January 1, 2020.

Prices Subject to Change Without Notice

Phone: 402-362-6651 or 888-477-5769 \* Fax: 402-362-6566 \* York, Nebraska

# PVC Pipe

## PIP, IPS, & Surface Pipe

### (Load Quantities)



**See Additional PVC Sections for Details on Pipe & Fittings**

Size	Bundle Size	Flatbed Load	Stepdeck Load
<u>PIP</u>			
6"	30 PCS.	9600'	12000'
8"	18 PCS.	5760'	6720'
10"	15 PCS.	3600'	4000'
12"	8 PCS. & 12 PCS.	2560'	2880'
14"/15"	6 PCS.	1440'	1560'
18"	4 PCS. & 6 PCS.	1000'	1100'
21"	4 PCS.	640'	720'
24"	2 PCS.	640'	640'

\*\*\*Some Available in 20' & 40' Sections.\*\*\*

<u>IPS</u>			
2"	158 PCS.	50560'	63200'
3"	88 PCS.	28160'	35200'
4"	48 PCS.	15360'	19200'
6"	26 PCS.	7840'	8960'
8"	15 PCS. & 18 PCS.	4840'	4950'
10"	12 PCS. & 15 PCS.	3240'	3600'
12"	6 PCS. & 8 PCS.	2240'	2400'

\*\*\*Some Available in 20' & 40' Sections.\*\*\*

<u>SURFACE</u>			
6"	30 PCS.	7200'	9000'
8"	11 PCS. & 22 PCS.	4320'	5280'
10"	9 PCS. & 18 PCS.	3000'	3240'
12"	7 PCS. & 14 PCS.	2040'	2310'

\*\*\*Standard Spacing: 20", 24", 30", 36" & 40" Spacing.\*\*\*

## Contact Us For Current Pricing!

\*\*\*Gasketed & Belled Ends Available.\*\*\*

\*\*\*PVC PIP, IPS, Heat/Air & Surface Fittings Available.\*\*\*

\*\*\*Galvanized, Epoxy Underground Fittings Available.\*\*\*

## Kroy Industries, Inc.

Prices Effective: January 1, 2020.

Prices Subject to Change Without Notice

Phone: 402-362-6651 or 888-477-5769 \* Fax: 402-362-6566 \* York, Nebraska